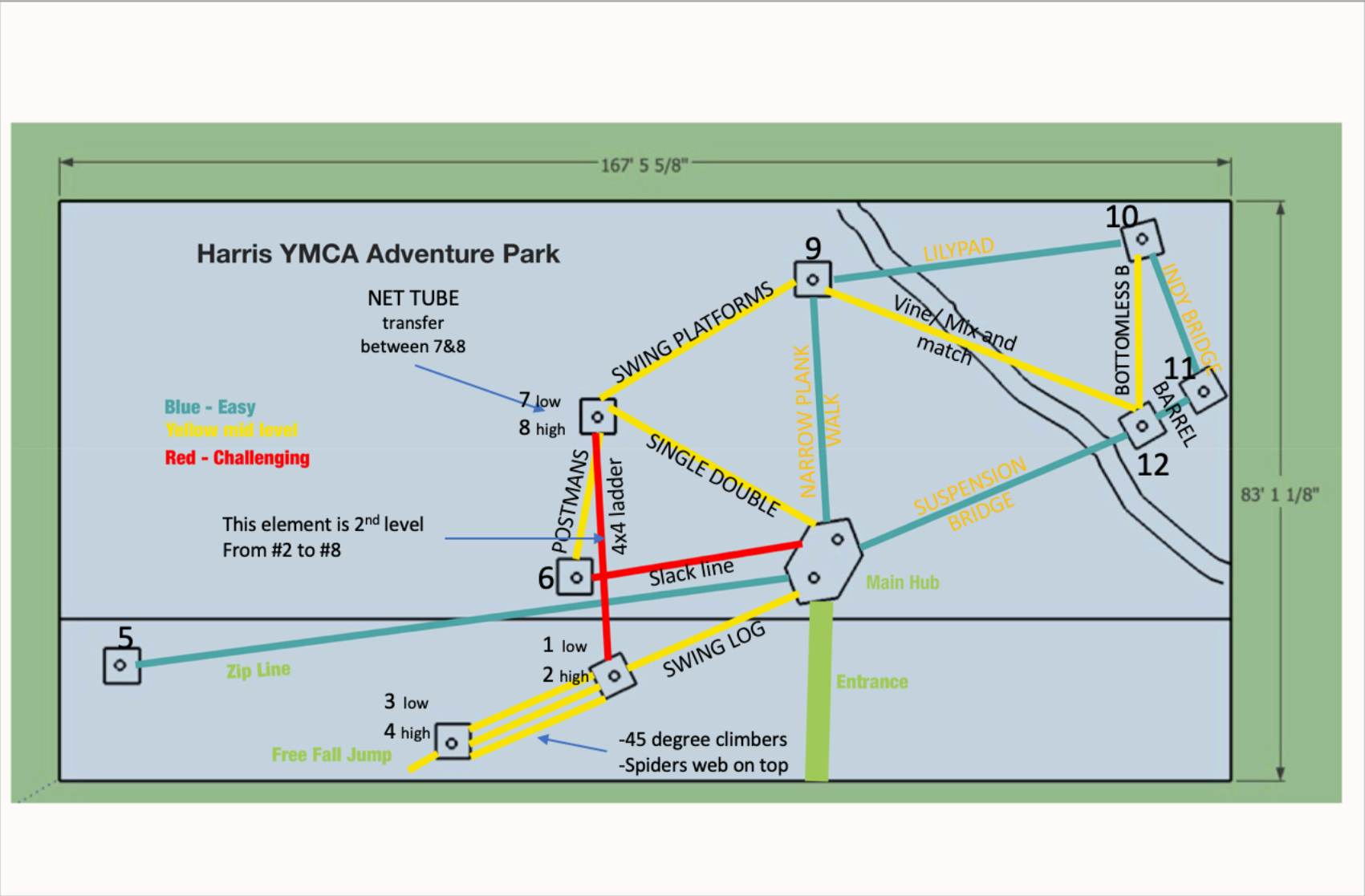


HARRIS YMCA ADVENTURE COURSE LAYOUT



CHALLENGE BY CHOICE DESIGN

This course is set up as a challenge by choice, allowing for a faster flow and minimizing the staff/participant ratio. This set up also enables participants to make choices throughout the course. To help participants make a decision, the course sections can be color coded, blue, yellow, and red.

Blue will designate the warm up or easier paths including events that are more stable such as the suspension bridge, Indy bridge, barrel crawl, plank walk or lily pads.

Yellow will designate the mid range events which are more challenging yet still achievable by most people. These events include, Burma Bridge, vine traverse, single double, swinging platforms, swinging logs, postman's walk, 45 degree climber, spider's web.

Red will designate the more challenging events that not just anyone can get on the first try. One or two of these events will present a challenge that may take several visits to accomplish. These events include a 4x4 ladder and slack line.

ADVENTURE COURSE ELEMENTS



SUSPENSION BRIDGE – BLUE

THE MOST STABLE EVENT ON THE COURSE
PROVIDES A EASY WALK TO THE NEXT PLATFORM



Barrel Crawl- Blue

Crawl through the wooden tube to
make it to the next platform



Indy Bridge- Blue

Harness your inner Indiana Jones to
navigate this bridge



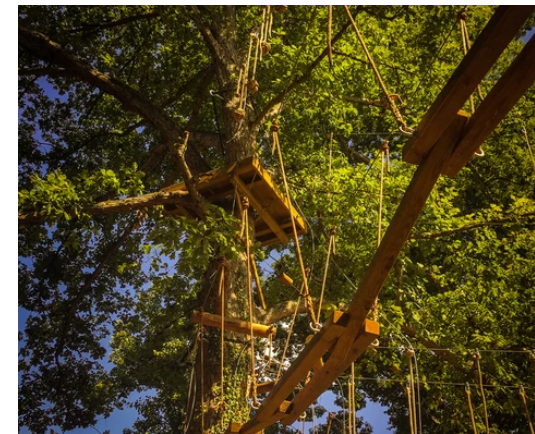
MARROW PLANK WALK – BLUE

PLANKS ON TWO HORIZONTAL CABLES
PROVIDE SWINGING WALKWAY WITH ADDED
VERTICAL ROPES FOR SUPPORT



LILY PAD – YELLOW

EACH STEP IS A LILY PAD CARVED FROM WOOD
THAT MOVES AS IF YOU ARE WALKING ON
LEAVES IN A POND



Single Double- Yellow

Navigate the widening and narrowing of
planks as you make your way across

ADVENTURE COURSE ELEMENTS



BOTTOMLESS BURMA –

YELLOW

MORE CHALLENGING THAN THE THREE CABLE BURMA BRIDGE EACH STEP SWINGS REQUIRING STRENGTH AND FOCUS



PLATFORM WALK – YELLOW

EACH PLATFORM IS ITS OWN INDIVIDUAL ADVENTURE, EACH ONE IS TILTED AT A DIFFERENT ANGLE AND HAS A DIFFERENT SWING TO IT



VINE TRAVERSE – YELLOW

YOU MAY NOT BE SWINGING LIKE TARZAN BUT YOU SURE WILL FEEL LIKE IT AS YOU REACH FOR THE NEXT VINE TO GET ACROSS THE EVENT



POSTMAN'S WALK – YELLOW

CHALLENGES YOUR AGILITY AND NERVE AS YOU INCH ACROSS A FOOT CABLE WHILE HOLDING ONTO A HAND ROPE



Swinging Log- Yellow

Horizontal log that swings as you make your way across



Spider Web- Yellow

Navigate the openings as you traverse the giant spider's web

Beanstalk Builders

ADVENTURE COURSE ELEMENTS



45 Degree Climbers-

Yellow

Walk along the cables or planks to make your way up



Tube Net- Yellow

Climb in between levels using this fun tube net



4x4 LADDER – RED

EACH STEP MOVES AND MAY BE IN DIFFERENT SPOT THAN YOU THINK REQUIRING GREAT FOCUS AND SKILL TO NAVIGATE



SLACK LINE – RED

THE POPULAR SLACKLINE CAN BE TACKLED LIKE PRO WITH NO HANDS OR USE THE TETHER FOR SUPPORT AND FEEL LIKE ONE

ADVENTURE COURSE ENTRIES & EXITS



Drawbridge



Zipline



Free Fall Jump

ADVENTURE COURSE GEAR



FULL BODY HARNESS

Innovative harness for high ropes courses and adventure parks. Easy-to-use, uncomplicated design



PERSONAL SAFETY HELMET

ADVENTURE COURSE GEAR

COUDOU KONG



HOW DOES IT WORK?

The principle of operation is very simple: the hook's opening is smaller than the diameter of the cable, but greater than the thickness of the plates. In this way, safety is guaranteed. Once you enter the lifeline, it is impossible to accidentally disconnect before the end of the course. Only by a special key supplied to the manager of the park, it is possible to unlock the sleeve and then make ultra-rapid evacuations in case of illness, storm, fire, etc...

Thanks to the various components, it is possible to secure all steps and the various games of your park, such as rope jumps, with the new ZAZA 2 Connect. Coudou Pro system will allow you to save on surveillance staff costs and ensure better security for your customers

ADVENTURE COURSE GEAR

HEAD RUSH QUICKFLIGHT

The QuickFlight Free Fall Device provides an exciting free fall experience with high throughput and low operational costs for ropes courses

